



**HAINES**

**36 SEDAN**

[hainesmarine.co.uk](http://hainesmarine.co.uk)

  
ESTD 1845  
Val Wyatt Marine



## RIVER / ESTUARY CRUISING

The 36 Sedan is suitable for river/estuary cruising, a semi-displacement hull delivers excellent handling, good manoeuvrability and comfort for longer cruises. Built to order with a range of single engine options and Haines unquestionable build quality.







## SPACE AND COMFORT

Light and airy throughout, with full opening 'slide and stack' patio doors connecting the saloon to the aft deck area. The large island double en-suite cabin forward and a well equipped galley provide both comfort and ample storage in abundance. The generous sized toilet compartment with a separate shower delivers further creature comforts, while a generous open-plan saloon space provides excellent accommodation for those longer stays onboard.



## SALOON

Twin Webasto Bluesky electric hatches and sliding openings to both side windows (side door to starboard optional) provide plenty of light and ventilation to the helm/saloon area. Helm position to starboard with sliding double helm seat. Helm position with dash and full instrumentation, leather bound Haines stainless steel steering wheel, engine controls and footrest below helm. Electrics panel and battery isolators located in cupboard below helm seat, with sideboard unit aft of this area on the starboard side of saloon. Aft forward/aft facing seat with pivoting backrest makes up to an L-shaped starboard side settee arrangement or can be used as part of the aft deck seating area.

Port side flip-over double crew seat with large drawer below, dropping down to make up port side L-shaped settee arrangement which also converts into an additional double berth (sliding with drop down stainless steel leg). Additional storage provided in the aft port side corner of the saloon by a cocktail cabinet (optional second fridge position) with a drawer above, and drawers below all settees. Access to aft cockpit through full opening 'slide and stack' patio doors.





## FORWARD CABIN

Large island double berth with side steps and a large drawer below, further storage below mattress in a large locker, additional access to chain locker behind removable headboard. Bed side shelves with under deck lockers above, both extending aft from the chain locker bulkhead to the two port and starboard wardrobes. Wardrobes both complete with hanging rails, hooks and lighting. Two flush-fit overhead escape hatches allow plenty of natural light and air flow into the cabin. Mirror and coat hooks fitted to the aft bulkheads.



## GALLEY

Galley to port with Avonite worktop fitted with a two burner gas hob with glass lid, double square stainless steel sinks complete with drainage grooves and a through worktop waste bin. A 130 litre stainless steel refrigerator with cutlery drawer above, stainless steel 30 litre gas oven / grill with storage for pots and pans below. Large cupboard below worktop, outboard under deck cupboard and eye-level lockers on the forward and aft bulkheads provide ample storage.





## TOILET / SHOWER

Toilet compartment to starboard with separate adjoining shower, Avonite worktops and surface mounted round ceramic sink with tall mixer tap. Manual toilet to waste tank on raised plinth. Storage provided by outboard shelving and under deck eye-level cupboard. Hinged acrylic shower door and a rainfall style shower with separate shower head and hose. Synthetic teak deck mat to floor of toilet compartment and a self draining GRP surface to shower compartment.





## DECKS / AFT COCKPIT

Full opening 'slide and stack' patio doors open saloon to the aft deck space with forward facing seating across the full beam of the boat. A large storage compartment is accessed through a lazarette deck hatch, a gas locker and storage locker under aft seating, with additional storage provided in port/starboard wing lockers and port side under seat locker beside the gate.

An overhanging GRP peak houses three separate large skylights, one opening and two fixed. Stainless steel aft gate gives access from the aft cockpit to the bathing platform, allowing easy boarding from either the side or the aft end. Steps from aft cockpit to the wide side decks are helped with the conveniently positioned hand rails. Curved grab rails run along cabin side to forward pulpit. The foredeck accommodates a deck locker, a manual anchor winch and bow roller, with either a galvanized anchor or mud weight.





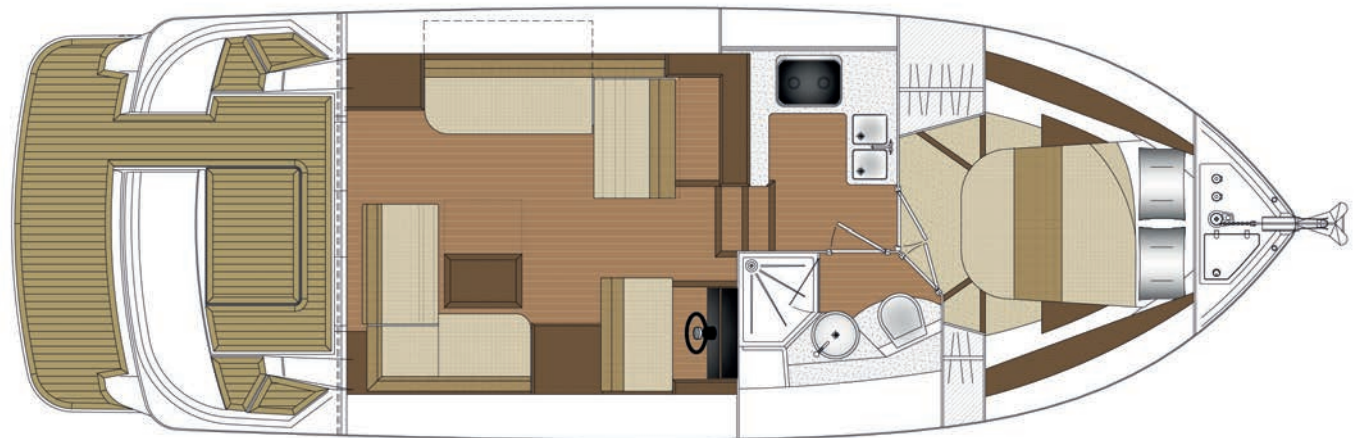
# SPECIFICATION

## KEY FEATURES

- Four berth sedan cruiser (or six berth with mid cabin option)
- Semi-displacement hull
- Single drive diesel engine
- River/estuary cruising capabilities
- Excellent slow speed handling
- Choice of interior timber finishes
- Bonded frameless windows
- Wide non-slip decks
- GRP bathing platform with transom gate for easy access
- Full opening 'slide and stack' patio doors
- Twin flush hatches to forward cabin
- Electric sunroofs to saloon
- Skylights to aft peak
- Speeds to 10 knots
- RCD Category C

## DIMENSIONS

Overall Length	36ft 0in (10.97m)
Beam	12ft 4in (3.76m)
Air Draft	8ft 6in (2.59m)
Draft	3ft 1in (0.94m)





# SPECIFICATION

## CAPACITIES

- Fuel tank: 80 gallons / 360 litres
- Water tank: 72.5 gallons / 330 litres
- Waste tank: 44 gallons / 200 litres
- Calorifier tank: 50 litres (complete with immersion)

## HULL & CONSTRUCTION

- Bonded-in tinted windows
- Stainless steel rubbing strake
- Stainless steel deck cleats (x6)
- Stainless steel pulpit & grab rails
- Stainless steel water, fuel & holding tanks
- Non-Slip GRP deck finish
- Bathing platform for rear & side access
- GRP Engine vents with stainless steel grill & integrated (illuminated) foot step

## ELECTRICAL

- 240v shore connection
- 12v electrical system
- 240v sockets: 3 x double 240v sockets (to saloon, galley and forward cabin)
- 12v sockets: 1 x cigar socket (to helm position)
- Batteries: 3 x 130Ah AGM domestic batteries, 1 x 130Ah AGM engine battery
- Immersion heater
- Radio (Bluetooth, Aux & USB input)
- Stainless steel refrigerator: 130 litre
- Lighting (Interior): LED down lighters, pelmet lighting, step lights, wardrobe lights, cocktail cabinet lighting, under berth lighting and berth reading lights
- Lighting (Exterior): LED deck lights with remote control
- Navigation Lights: Port, starboard, stern and steaming lights
- Stainless steel twin trumpet horn
- 2 x electric wipers
- 2 x Webasto BlueSky acrylic electric hatches to saloon roof
- Whale water pump (with integrated accumulator tank)
- Whale electric bilge pump



# SPECIFICATION

## ENGINE OPTIONS

- Nanni N4.65 (59hp) 8 knots
- Nanni N4.115 (115hp) 9 knots
- Volvo D3-150 (150hp) 10 knots

## SAFETY

- Automatic & manual bilge pumps
- 2 x auto fire extinguisher in engine compartment (each 2kg)
- 2 x manual fire extinguishers (each 1kg)
- Fire blanket
- Wide non-slip decks
- Life buoy & boat hook
- Anchor or mud weight with chain, anchor bow roller
- Manual winch

## GAS SYSTEM

- Smev 30 litre oven and grill
- Smev 2 burner hob with glass top
- 2 x 3.9kg propane gas bottles  
(including automatic changeover with OPSO)

## MISCELLANEOUS

- Avonite worktops to galley and toilet compartment
- Outside screen cover
- 2 x saloon foot stools
- Hi / low folding table
- Ensign (1 1/4 yard) with stainless steel flag staff
- Stainless steel / leather bound steering wheel
- 3 x skylights to aft peak (one opening and two fixed)
- Synthetic teak decking to bathing platform, steps and aft deck
- Fenders (x6) & warps (x4)
- Haines pennant





EST 1845

Val Wyatt Marine

### UK Sales

Val Wyatt Marine  
Willow Marina, Willow Lane,  
Wargrave, Berkshire, RG10 8LH

+44(0)1189 403211  
[info@valwyattmarine.co.uk](mailto:info@valwyattmarine.co.uk)  
[valwyattmarine.co.uk](http://valwyattmarine.co.uk)



[hainesmarine.co.uk](http://hainesmarine.co.uk)